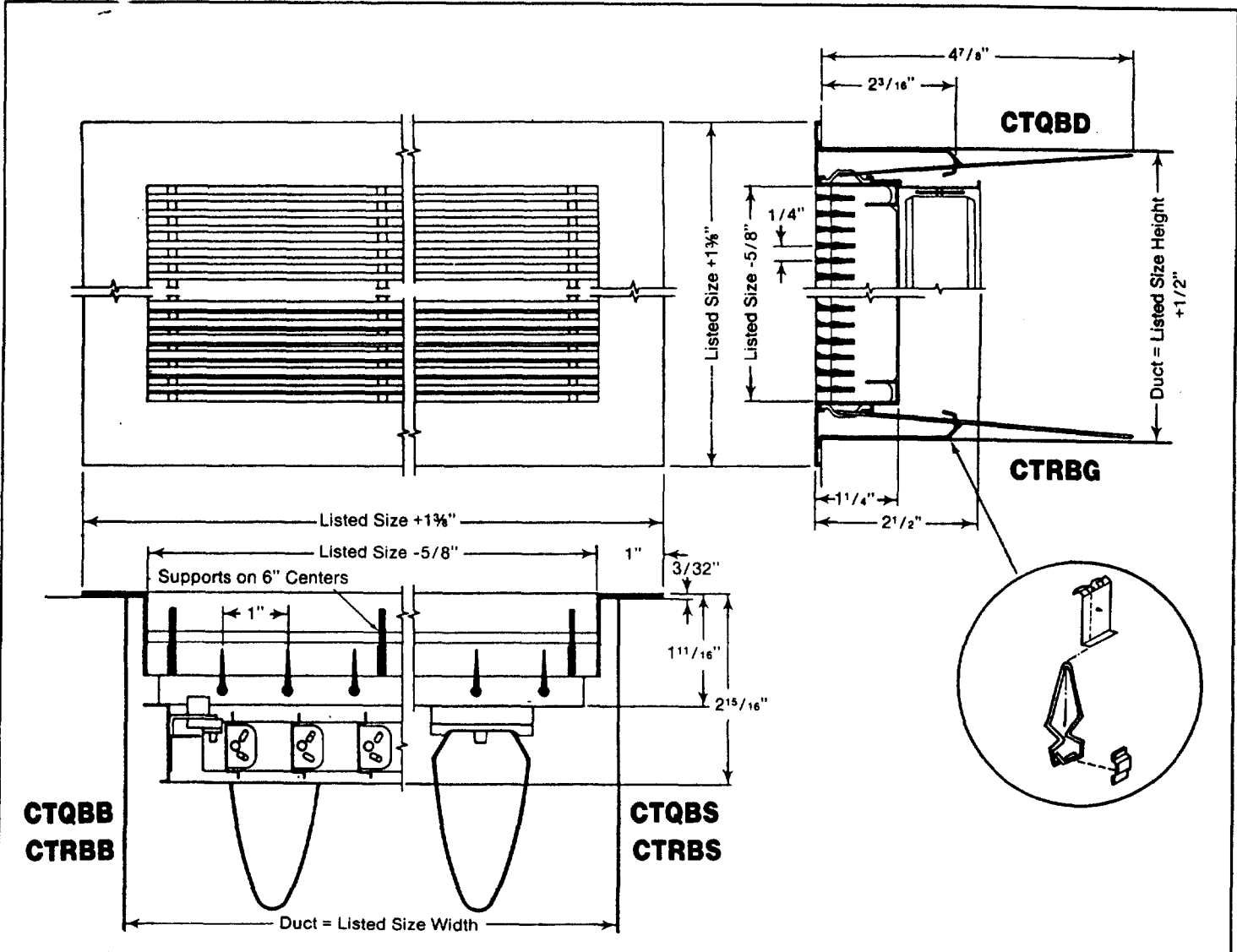


## SPECIFICATION SHEET

MODELS CTQB and CTRB with Option H — TRIMAIRE  
EXTRUDED ALUMINUM LINEAR REGISTERS & GRILLES  
Ceiling and Sidewall Application (1/8" Bar on 1/4" Centers)

**STANDARD DIMENSIONS**  
(Metric on Reverse Side)

CARNES COMPANY, 448 S. Main Street, P. O. Box 930040, Verona, WI. 53593-0040 Phone: 608/845-6411 Fax: 608/845-6470



DIMENSIONS LISTED IN INCHES

Model	Degree Blade Deflection	Damper	Straightening Vanes	Available Sizes*			
				Listed Size Height		Listed Size Width	
				Min.	Max.	Min.	Max.
CTQBG	0	NO	NO	2	24	6	72
CTRBG	15	NO	NO	2	24	6	72
CTQBD	0	YES	NO	2	24	6	72
CTRBD	15	YES	NO	2	24	6	72
CTQBS	0	NO	YES	2	12	6	72
CTRBS	15	NO	YES	2	12	6	72
CTQBB	0	YES	YES	2	12	6	72
CTRBB	15	YES	YES	2	12	6	72

**NOTES:**

1. Single blade damper on Size 2".
2. Opposed blade damper on Size 2½" and larger.
3. Option H is concealed hanger for sidewall or ceiling.
4. All ducts by others.
5. Standard finish #26 sanded, etch and lacquer.

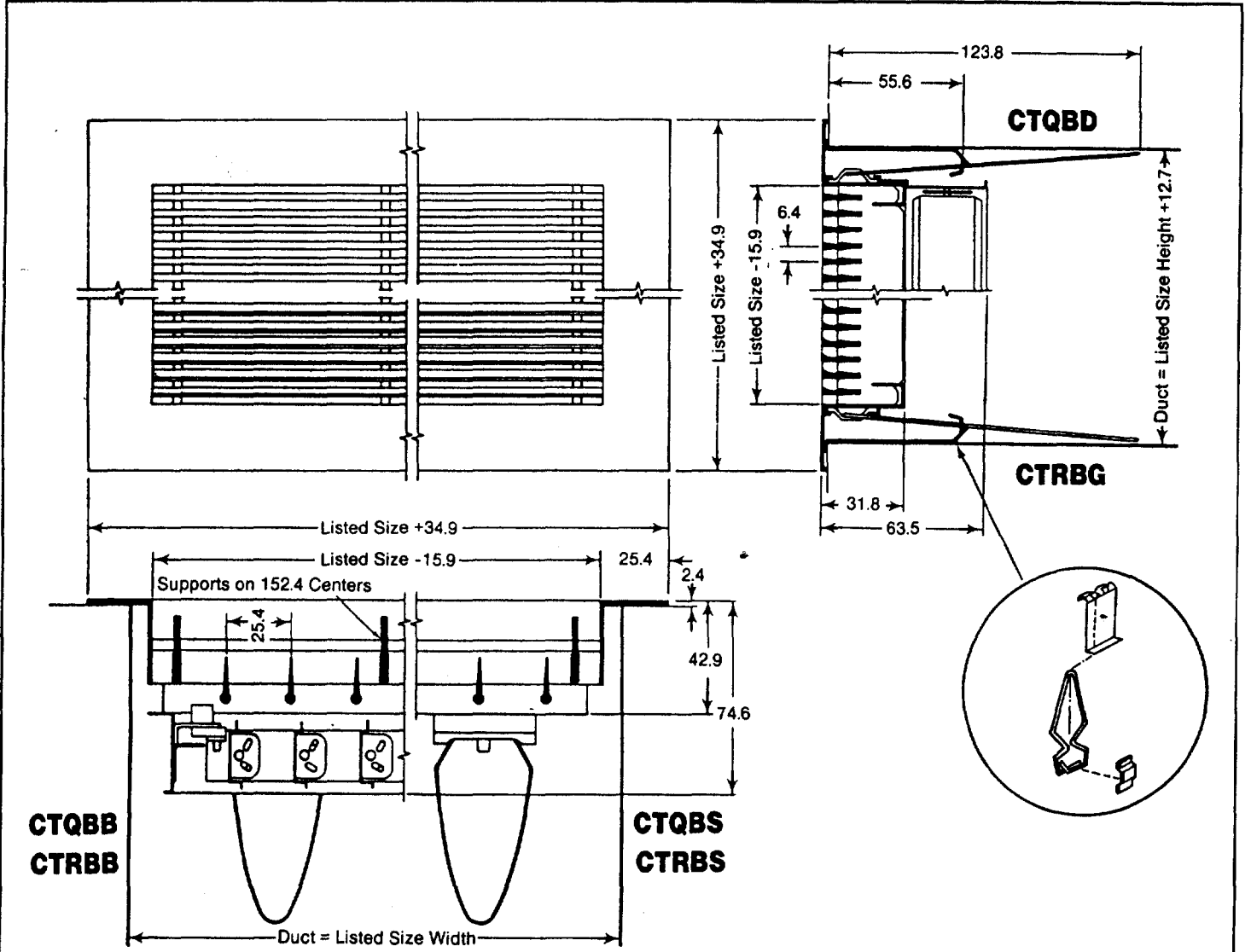
\*Minimum & Maximum single unit sizes. Larger list widths furnished as separate pieces.

## SPECIFICATION SHEET

MODELS CTQB and CTRB with Option H — TRIMAIRE  
 EXTRUDED ALUMINUM LINEAR REGISTERS & GRILLES  
 Ceiling and Sidewall Application (3.2mm Bar on 6.4mm Centers)

**METRIC DIMENSIONS**  
 (Standard on Reverse Side)

CARNES COMPANY, 448 S. Main Street, P. O. Box 930040, Verona, WI. 53593-0040 Phone: 608/845-6411 Fax: 608/845-6470



DIMENSIONS LISTED IN MILLIMETERS

Model	Degree Blade Deflection	Damper	Straightening Vanes	Available Sizes*			
				Listed Size Height		Listed Size Width	
				Min.	Max.	Min.	Max.
CTQBG	0	NO	NO	51	610	152	1829
CTRBG	15	NO	NO	51	610	152	1829
CTQBD	0	YES	NO	51	610	152	1829
CTRBD	15	YES	NO	51	610	152	1829
CTQBS	0	NO	YES	51	305	152	1829
CTRBS	15	NO	YES	51	305	152	1829
CTQBB	0	YES	YES	51	305	152	1829
CTRBB	15	YES	YES	51	305	152	1829

**NOTES:**

1. Single blade damper on Size 51mm.
2. Opposed blade damper on Size 64mm and larger.
3. Option H is concealed hanger for sidewall or ceiling.
4. All ducts by others.
5. Standard finish #26 sanded, etch and lacquer.

\*Minimum & Maximum single unit sizes. Larger list widths furnished as separate pieces.