

Imperial [IP] Dimensions
Metric (SI) in Parentheses

CARNES COMPANY, 448 S. Main St., P. O. Box 930040, Verona, WI 53593-0040 Phone (608) 845.6411 Fax: (608) 845.6504 carnes@carnes.com

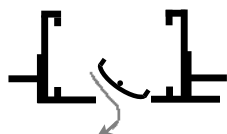
SLOT PATTERN ADJUSTMENTS



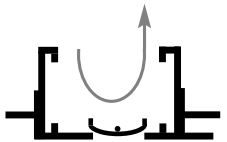
PERPENDICULAR



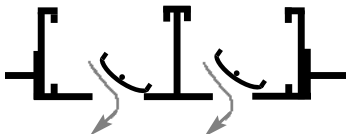
PARALLEL LEFT



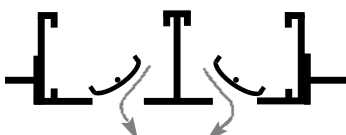
PARALLEL RIGHT



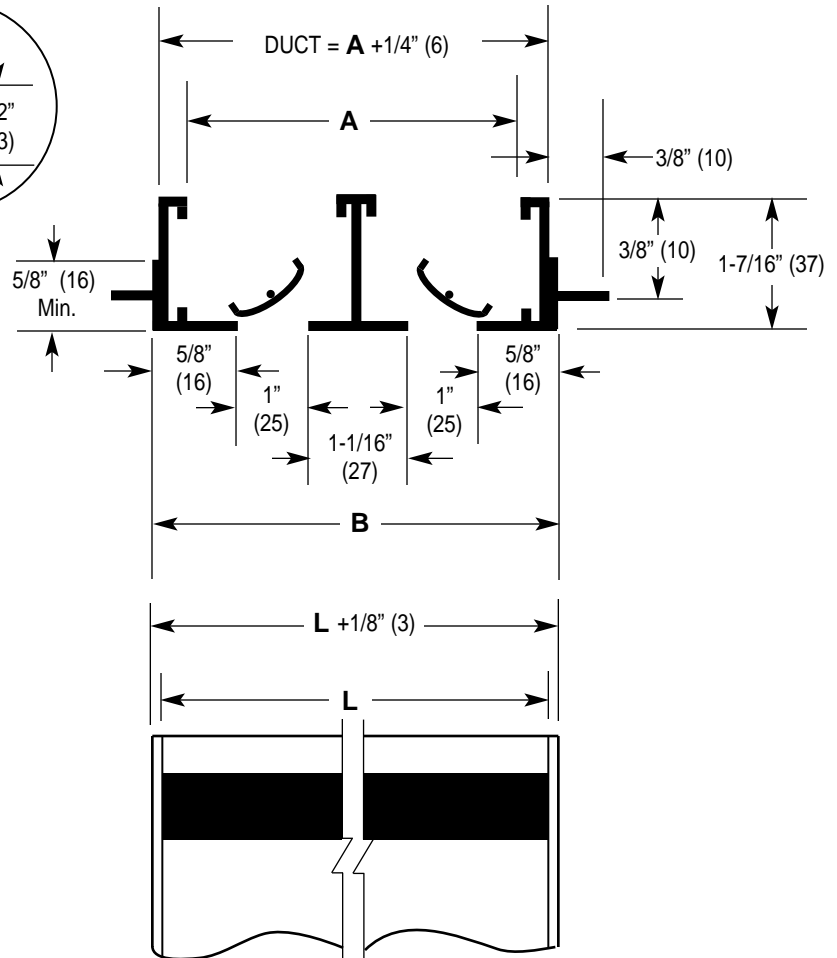
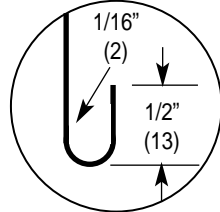
BLANK OFF



PARALLEL ONE-WAY
MULTIPLE SLOT



PARALLEL TWO-WAY
MULTIPLE SLOT



DIMENSIONS LISTED IN INCHES (Millimeters)

Dim.	No. of Slots							
	1	2	3	4	5	6	7	8
A	2-1/8" (54)	4-3/16" (106)	6-1/4" (159)	8-5/16" (211)	10-3/8" (264)	12-7/16" (316)	14-1/2" (368)	16-9/16" (421)
B	2-1/4" (57)	4-5/16" (110)	6-3/8" (162)	8-6/16" (214)	10-1/2" (267)	12-9/16" (319)	14-5/8" (372)	16-11/16" (424)

- Notes:**
1. Duct length is "L" + 1/4" (6).
 2. Order units 1/8" (3) shorter than grid size.
 3. Units have flat end caps that add 1/8" (3) to unit length.
 4. Maximum length "L" for one piece construction is 72" (1829).