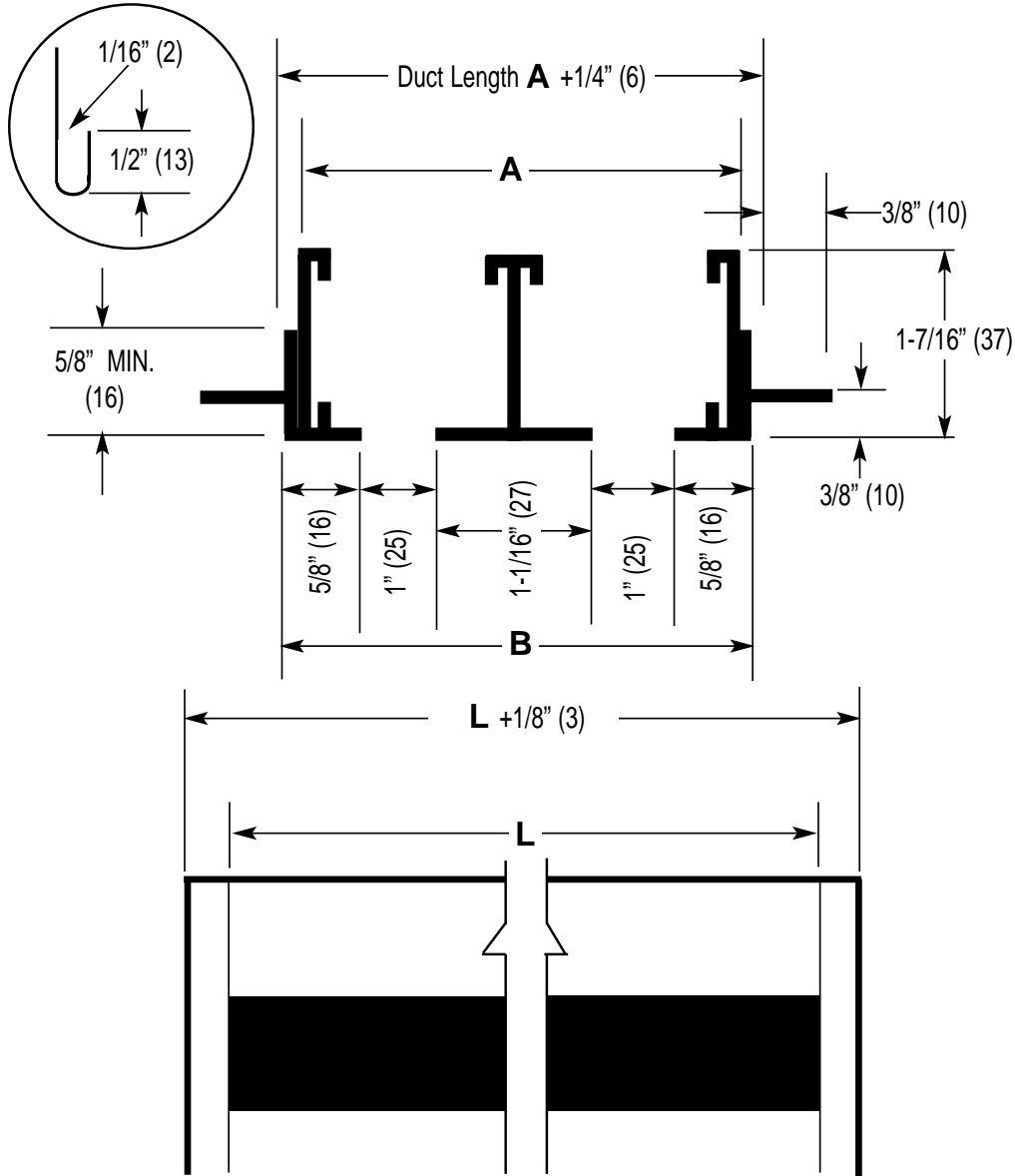


**IP [English] Dimensions**  
*SI (Metric) In Parentheses*

CARNES COMPANY, 448 S. Main St., P. O. Box 930040, Verona, WI 53593-0040 Phone: 608/845-6411 Fax: 608/845-6504 E-Mail: carnes@carnes.com www.carnes.com



Dim.	Number of Slots							
	1	2	3	4	5	6	7	8
<b>A</b>	2-1/8" (54)	4-3/16" (106)	6-1/4" (159)	8-5/16" (211)	10-3/8" (264)	12-7/16" (316)	14-1/2" (368)	16-9/16" (421)
<b>B</b>	2-1/4" (57)	4-5/16" (110)	6-3/8" (162)	8-7/16" (214)	10-1/2" (267)	12-9/16" (319)	14-5/8" (372)	16-11/16" (424)

- NOTES:**
1. Duct length is " $L$ " plus 1/4" (6mm).
  2. Order units 1/8" (3mm) shorter than grid size.
  3. Units have flat end caps that add 1/8" (3mm) to unit length.
  4. Maximum length " $L$ " for one piece construction is 72" (1829mm).