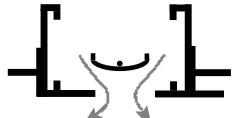


Imperial [IP] Dimensions
Metric (SI) in Parentheses

CARNES COMPANY 448 S. Main St., P. O. Box 930040, Verona, WI 53593-0040 Phone: (608)845-6411 Fax: (608)845-6504 www.carnes.com

SLOT PATTERN ADJUSTMENTS



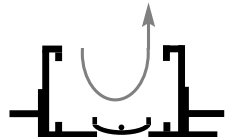
PERPENDICULAR



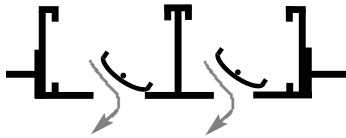
PARALLEL LEFT



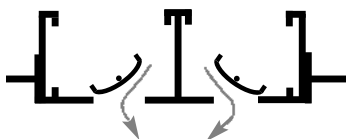
PARALLEL RIGHT



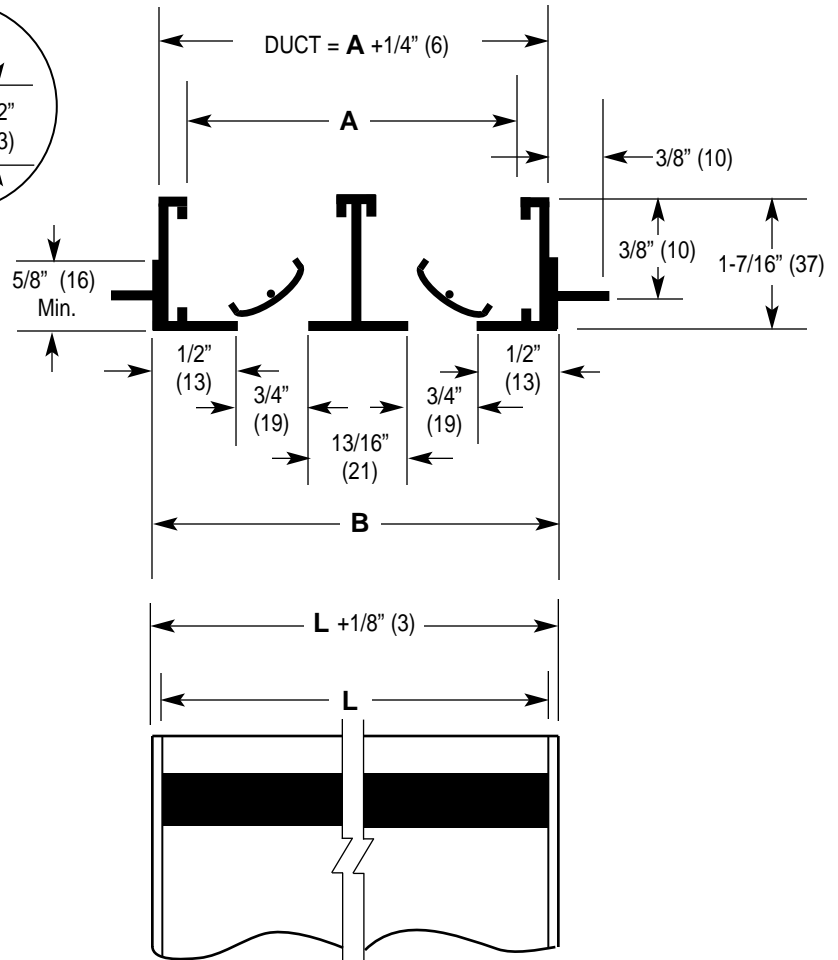
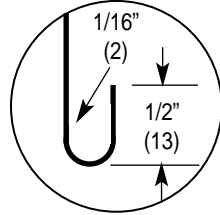
BLANK OFF



PARALLEL ONE-WAY
MULTIPLE SLOT



PARALLEL TWO-WAY
MULTIPLE SLOT



DIMENSIONS LISTED IN INCHES (Millimeters)

Dim.	No. of Slots							
	1	2	3	4	5	6	7	8
A	1-5/8 (45)	3-13/16 (84)	4-3/4 (121)	6-5/16 (160)	7-5/8 (200)	9-7/16 (240)	11 (280)	12-9/16 (319)
B	1-3/4 (45)	3-6/16 (84)	4-7/8 (124)	6-7/16 (164)	8 (203)	9-9/16 (244)	11-1/8 (283)	12-11/16 (322)

- Notes:**
1. Duct length is "L" + 1/4" (6).
 2. Order units 1/8" (3) shorter than grid size.
 3. Units have flat end caps that add 1/8" (3) to unit length.
 4. Maximum length "L" for one piece construction is 72" (1829).