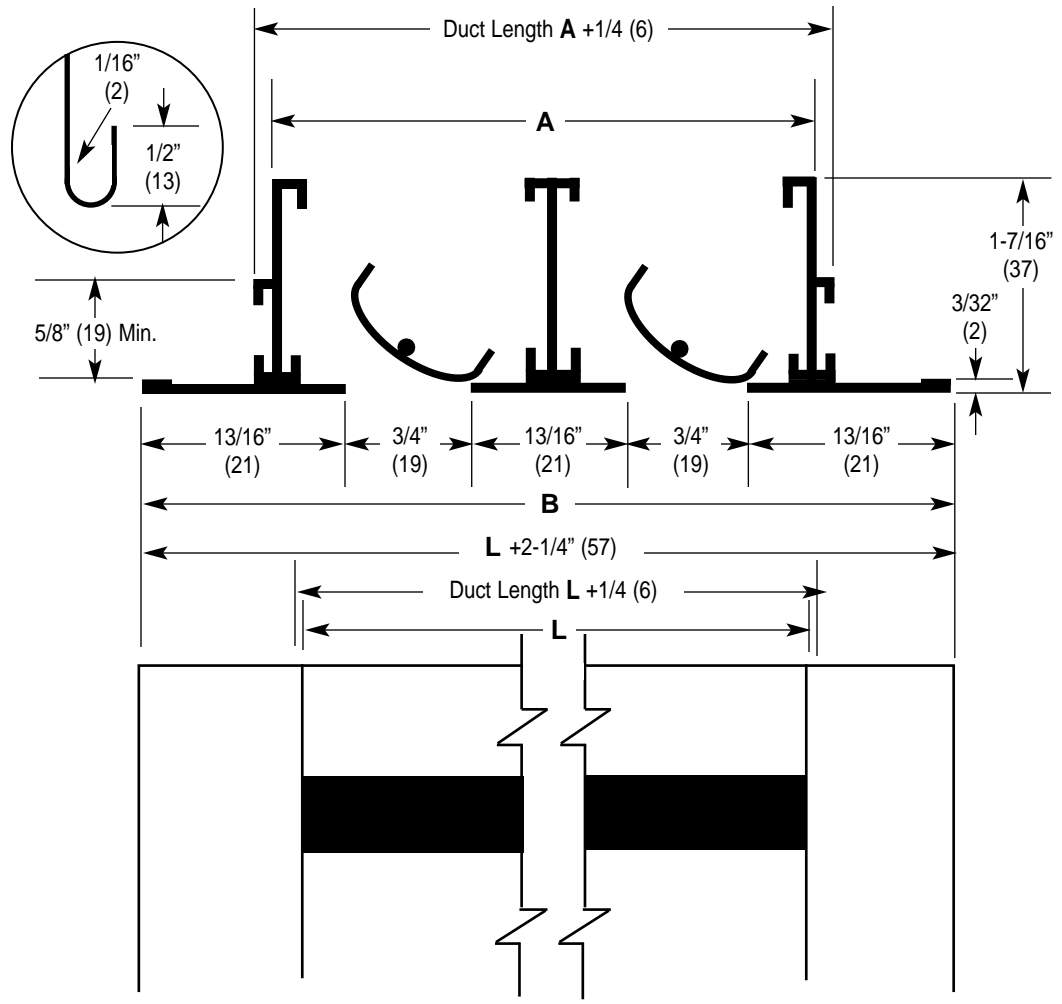
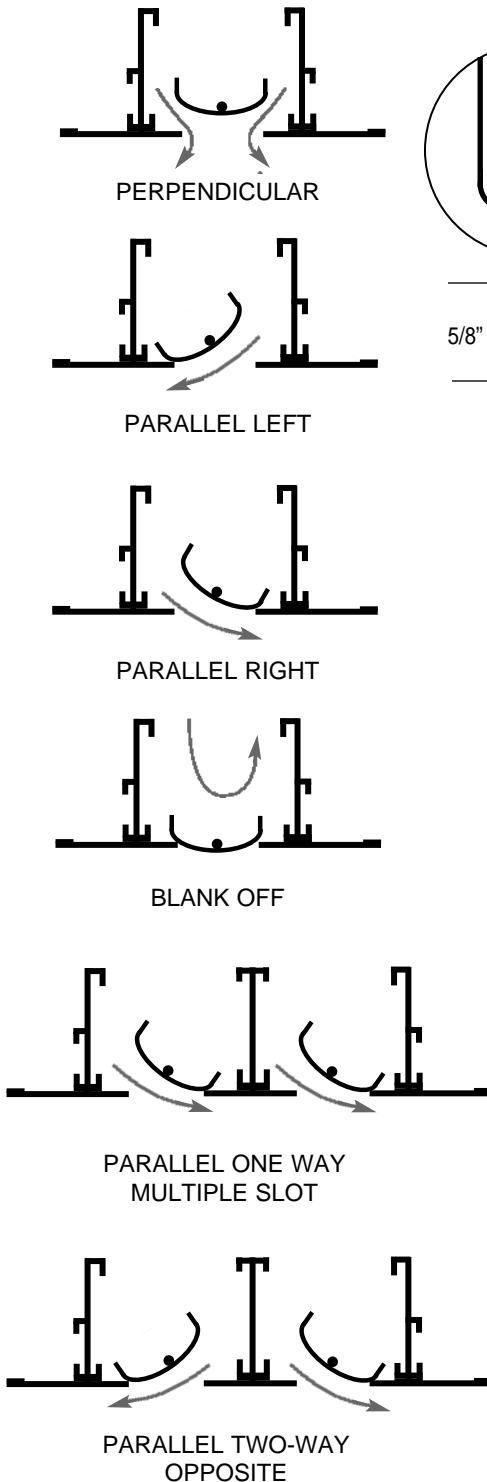


Imperial [IP] Dimensions
Metric (SI) in Parentheses

CARNES COMPANY 448 S. Main St., P. O. Box 930040, Verona, WI 53593-0040 Phone: (608)845-6411 Fax: (608)845-6504 www.carnes.com

SLOT PATTERN ADJUSTMENT



DIMENSIONS LISTED IN INCHES (Millimeters)								
Dim.	No. of Slots							
	1	2	3	4	5	6	7	8
A	1-5/8" (41)	3-3/16" (81)	4-3/4" (121)	6-5/16" (160)	7-7/8" (200)	9-7/16" (240)	11" (279)	12-9/16" (319)
B	2-3/8" (60)	3-15/16" (100)	5-1/2" (140)	7-1/16" (179)	8-5/8" (219)	10-3/16" (259)	11-3/4" (299)	13-5/16" (338)

- Notes:**
1. Maximum length "L" for one piece construction is 72" (1829).
 2. For butted units, allow 1/32" (.8) space between sections to provide for thermal expansion.