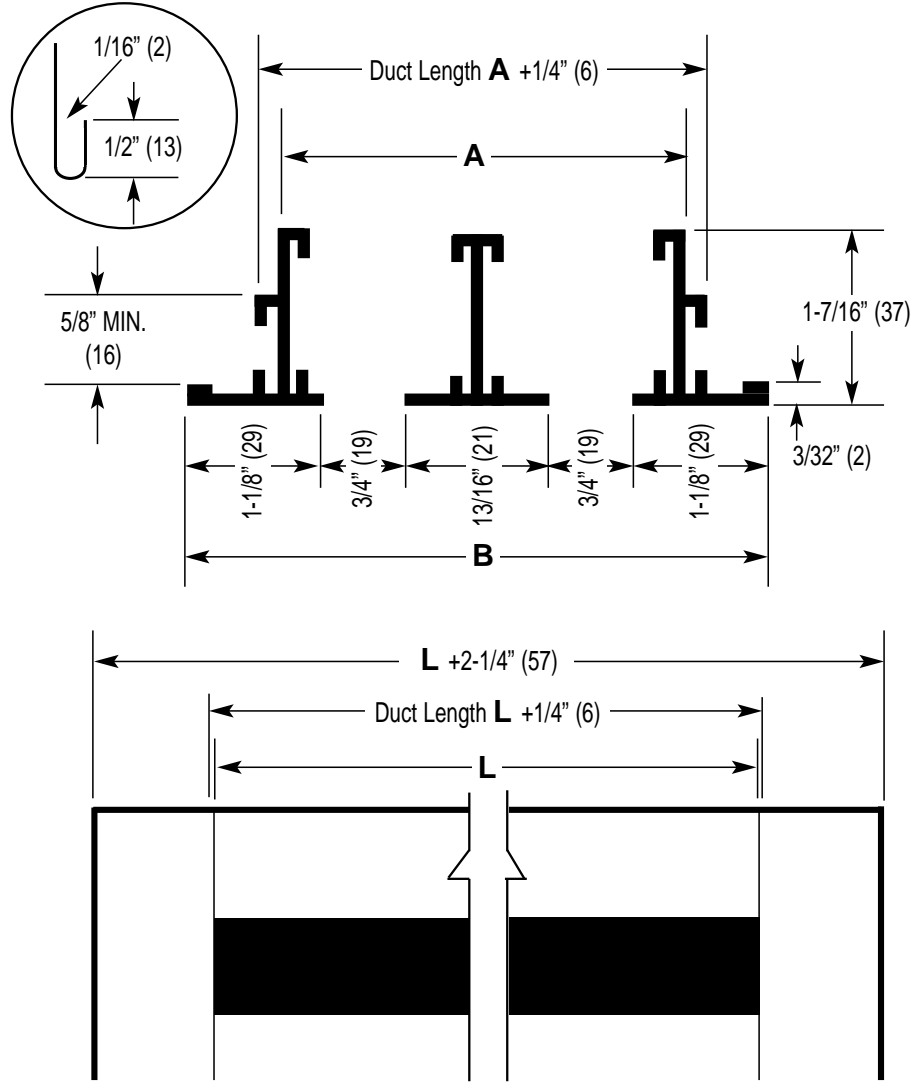


**IP [English] Dimensions**  
*SI (Metric) In Parentheses*

CARNES COMPANY, 448 S. Main St., P. O. Box 930040, Verona, WI. 53593-0040 Phone: 608/845-6411 Fax: 608/845-6504 E-Mail: carnes@carnes.com www.carnes.com



Dim.	Number of Slots							
	1	2	3	4	5	6	7	8
<b>A</b>	1-5/8" (41)	3-3/16" (81)	4-3/4" (121)	6-5/16" (160)	7-7/8" (200)	9-7/16" (240)	11" (279)	12-9/16" (319)
<b>B</b>	3" (76)	4-9/16" (116)	6-1/8" (156)	7-11/16" (195)	9-1/4" (235)	10-13/16" (275)	12-3/8" (314)	13-15/16" (354)

**NOTES:** 1. Maximum length "L" for one piece construction is 72" (1829mm).  
 2. For butted units, allow 1/32" (1mm) space between sections to provide for thermal expansion.