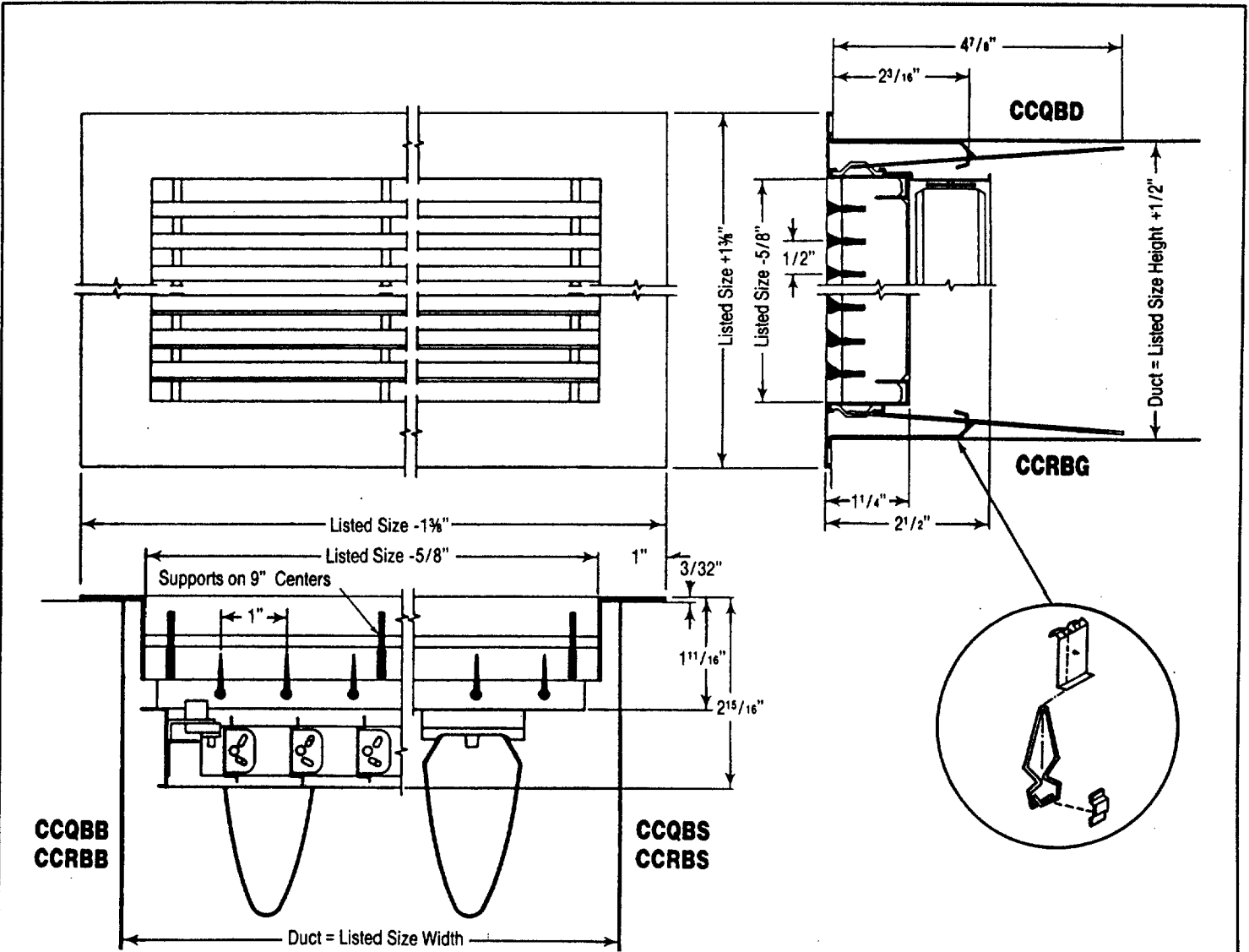


SPECIFICATION SHEET

MODELS CCQB and CCRB with Option H — CURTAINAIRE
 EXTRUDED ALUMINUM LINEAR REGISTERS & GRILLES
 Ceiling & Sidewall Application (1/4" Bars on 1/2" Centers)

STANDARD DIMENSIONS
(Metric on Reverse Side)

CARNES COMPANY, 448 S. Main St., P. O. Box 930040, Verona, WI. 53593-0040 Phone: 608/845-6411 Fax: 608/845-6470



DIMENSIONS LISTED IN INCHES

Model	Degree Blade Deflection	Damper	Straightening Vanes	Available Sizes*			
				Listed Size Height		Listed Size Width	
				Min.	Max.	Min.	Max.
CCQBG	0	NO	NO	2	24	6	72
CCRBG	15	NO	NO	2	24	6	72
CCQBD	0	YES	NO	2	24	6	72
CCRBD	15	YES	NO	2	24	6	72
CCQBS	0	NO	YES	2	12	6	72
CCRBS	15	NO	YES	2	12	6	72
CCQBB	0	YES	YES	2	12	6	72
CCRBB	15	YES	YES	2	12	6	72

*Minimum & Maximum single unit sizes. Larger list widths furnished as separate pieces.

NOTES:

1. Single blade damper on Size 2".
2. Opposed blade damper on Size 2 1/2" and larger.
3. Option H is concealed hanger for side wall or ceiling.
4. All ducts by others.
5. Standard finish #26, sanded, etch and lacquer.

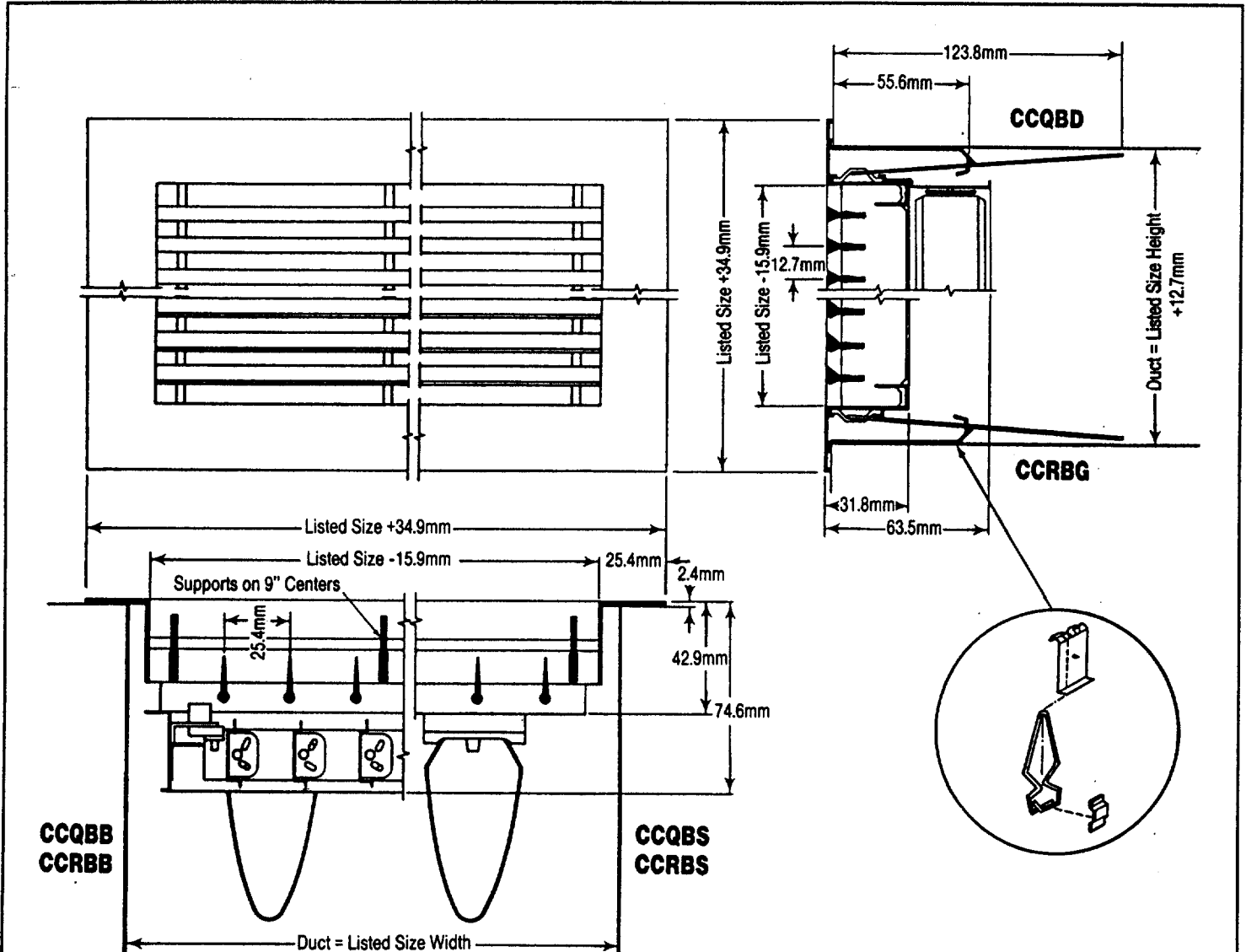
SPECIFICATION SHEET

MODELS CCQB and CCRB with Option H — CURTAINAIRE
 EXTRUDED ALUMINUM LINEAR REGISTERS & GRILLES
 Ceiling & Sidewall Application (6.4mm Bars on 12.7mm Centers)

METRIC DIMENSIONS

(Standard on Reverse Side)

CARNES COMPANY, 448 S. Main St., P. O. Box 930040, Verona, WI. 53593-0040 Phone: 608/845-6411 Fax: 608/845-6470



DIMENSIONS IN MILLIMETERS

Model	Degree Blade Deflection	Damper	Straightening Vanes	Available Sizes*			
				Listed Size Height		Listed Size Width	
				Min.	Max.	Min.	Max.
CCQBG	0	NO	NO	51	610	152	1829
CCRBG	15	NO	NO	51	610	152	1829
CCQBD	0	YES	NO	51	610	152	1829
CCRBD	15	YES	NO	51	610	152	1829
CCQBS	0	NO	YES	51	305	152	1829
CCRBS	15	NO	YES	51	305	152	1829
CCQBB	0	YES	YES	51	305	152	1829
CCRBB	15	YES	YES	51	305	152	1829

*Minimum & Maximum single unit sizes. Larger list widths furnished as separate pieces.

NOTES:

1. Single blade damper on Size 51mm.
2. Opposed blade damper on Size 64mm and larger.
3. Option H is concealed hanger for side wall or ceiling.
4. All ducts by others.
5. Standard finish #26, sanded, etch and lacquer.