

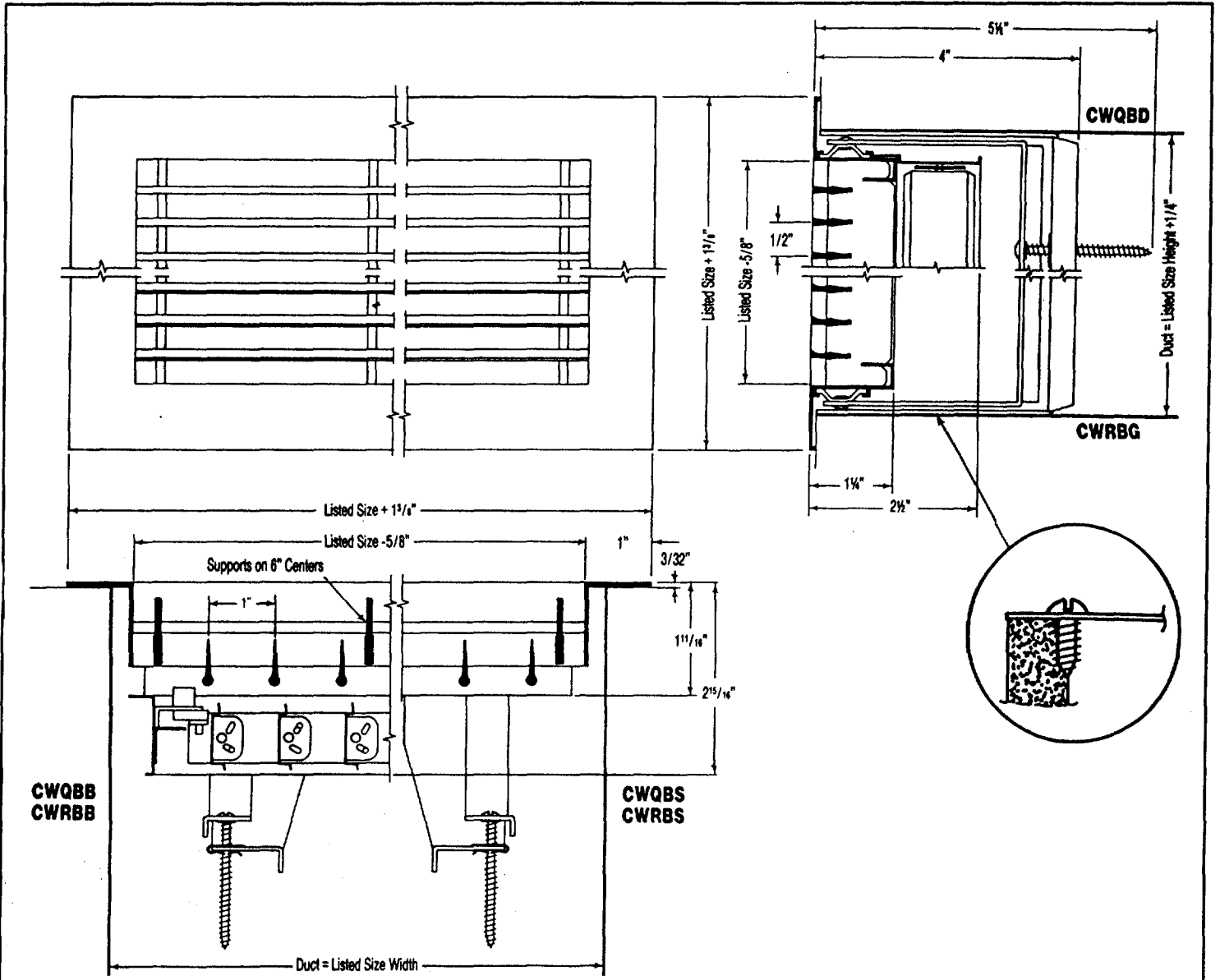
SPECIFICATION SHEET

MODELS CWQB and CWRB with Option U

TRIMAIRE EXT. ALUM. LINEAR REGISTERS & GRILLES
Ceiling & Sidewall Application (1/8" Bars on 1/2" Centers)

STANDARD DIMENSIONS
(Metric on Reverse Side)

CARNES COMPANY, 448 S. Main St., P. O. Box 930040, Verona, WI. 53593-0040 Phone: 608/845-6411 Fax: 608/845-6470



DIMENSIONS LISTED IN INCHES

Model	Degree Blade Deflection	Damper	Straightening Vanes	Available Sizes*			
				Listed Size Height		Listed Size Width	
				Min.	Max.	Min.	Max.
CWQBG	0	NO	NO	2	24	6	72
CWRBG	15	NO	NO	2	24	6	72
CWQBD	0	YES	NO	2	24	6	72
CWRBD	15	YES	NO	2	24	6	72
CWQBS	0	NO	YES	2	12	6	72
CWRBS	15	NO	YES	2	12	6	72
CWQBB	0	YES	YES	2	12	6	72
CWRBB	15	YES	YES	2	12	6	72

NOTES:

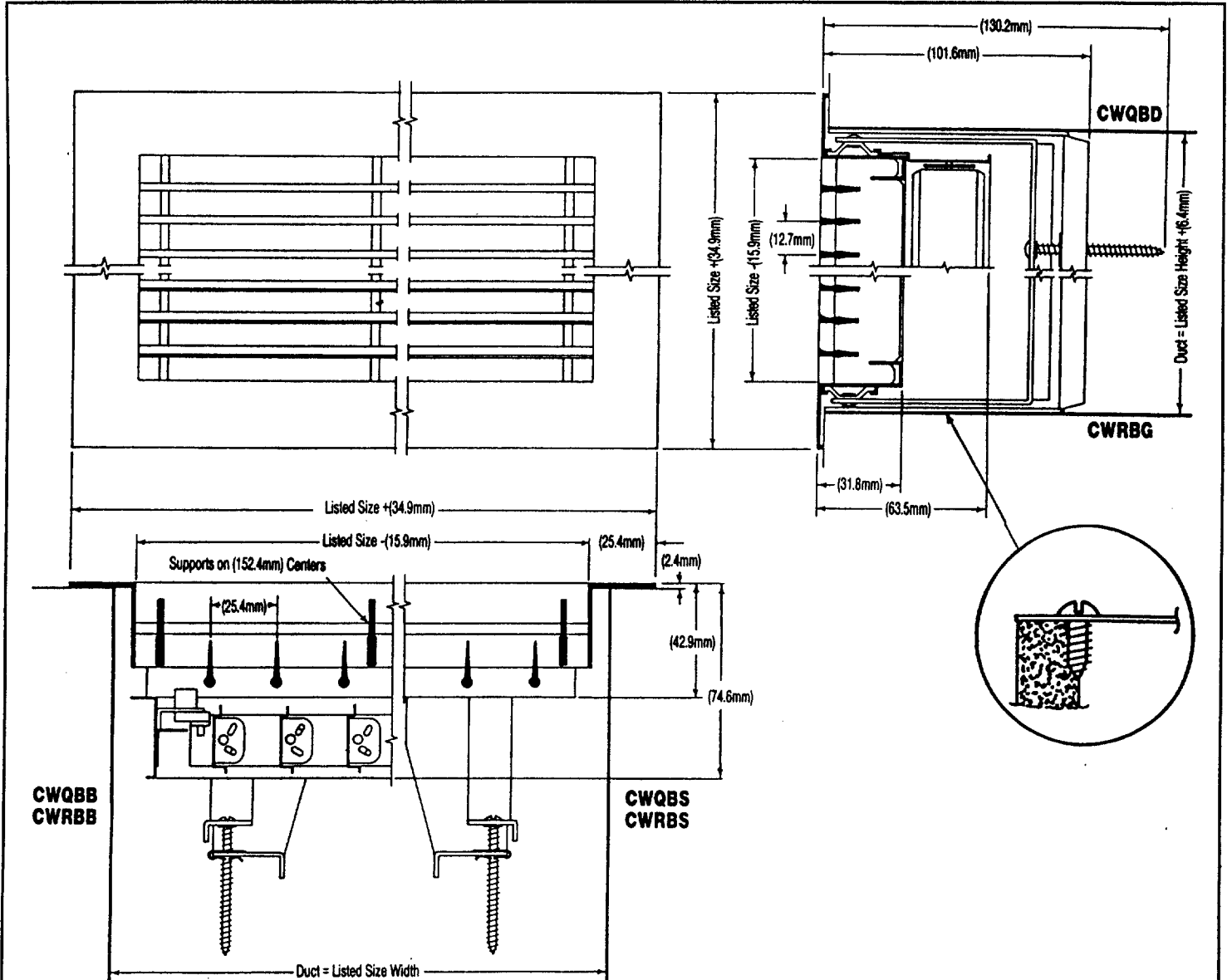
1. Single blade damper on Size 2".
2. Opposed blade damper on Size 2 1/2" and larger.
3. Option U is concealed hanger for sidewall or ceiling.
4. All ducts by others.
5. Standard finish # 26 sanded, etch & lacquer.

*Minimum & Maximum single unit sizes. Larger list widths furnished as separate pieces.

SPECIFICATION SHEET

MODELS CWQB and CWRB with Option U
TRIMAIRE EXT. ALUM. LINEAR REGISTERS & GRILLES
 Ceiling & Sidewall Application (3.2mm Bars on 12.7mm Centers)

CARNES COMPANY, 448 S. Main St., P. O. Box 930040, Verona, WI. 53593-0040 Phone: 608/845-6411 Fax: 608/845-6470



DIMENSIONS LISTED IN MILLIMETERS

Model	Degree Blade Deflection	Damper	Straightening Vanes	Available Sizes*			
				Listed Size Height		Listed Size Width	
				Min.	Max.	Min.	Max.
CWQBG	0	NO	NO	51	610	152	1829
CWRBG	15	NO	NO	51	610	152	1829
CWQBD	0	YES	NO	51	610	152	1829
CWRBD	15	YES	NO	51	610	152	1829
CWQBS	0	NO	YES	51	305	152	1829
CWRBS	15	NO	YES	51	305	152	1829
CWQBB	0	YES	YES	51	305	152	1829
CWRBB	15	YES	YES	51	305	152	1829

*Minimum & Maximum single unit sizes. Larger list widths furnished as separate pieces.

NOTES:

1. Single blade damper on Size 51mm.
2. Opposed blade damper on Size 64mm and larger.
3. Option U is concealed hanger for sidewall or ceiling.
4. All ducts by others.
5. Standard finish # 26 sanded, etch & lacquer.