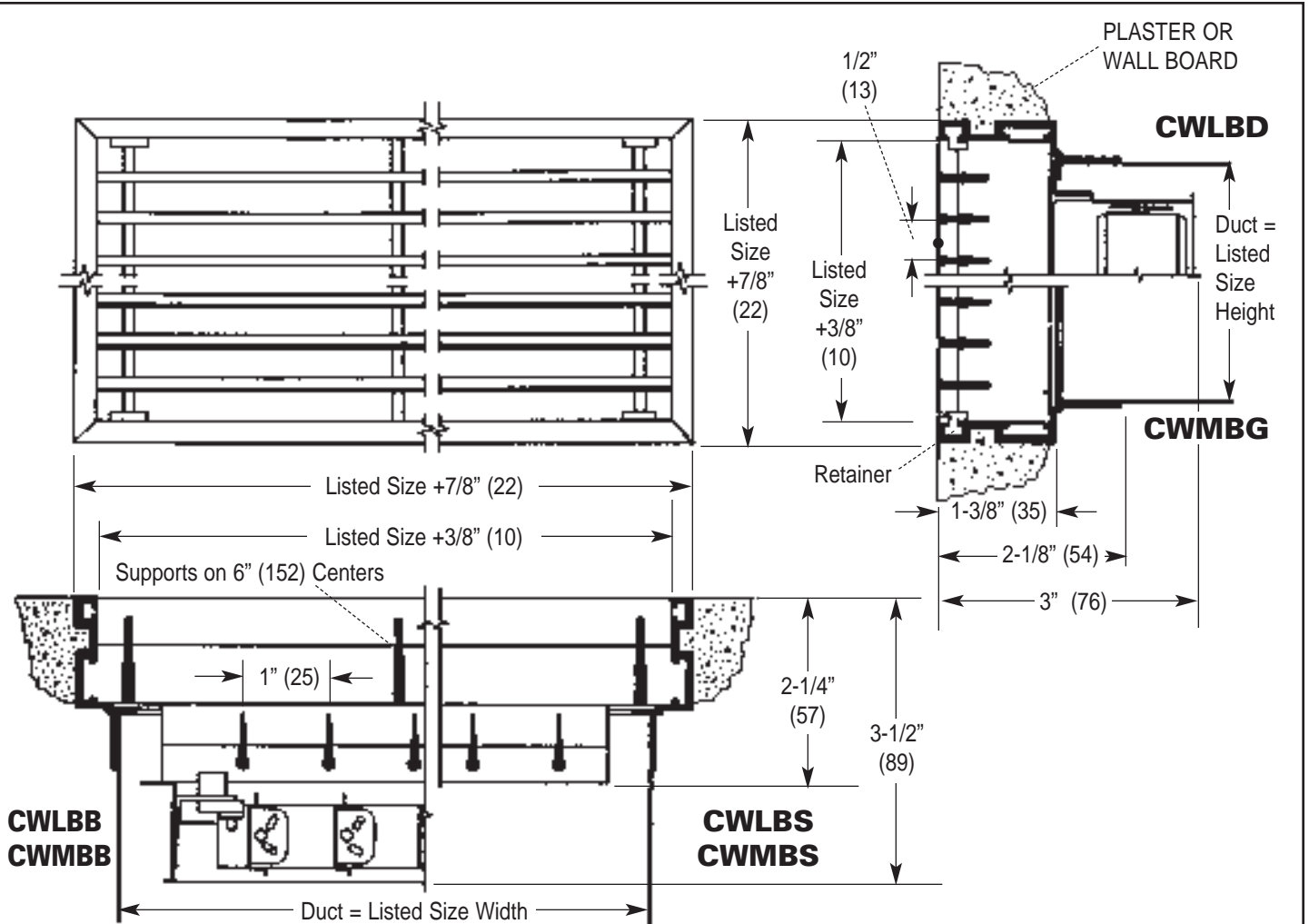


Imperial [IP] Dimensions
Metric (SI) in Parentheses

CARNES COMPANY 448 S. Main St., P. O. Box 930040, Verona, WI 53593-0040 Phone: (608)845-6411 Fax: (608)845-6470 www.carnes.com



Model	Degree Blade Deflection	Damper	Straightening Vanes	Available Sizes In Inches (Millimeters)*			
				Listed Size Height		Listed Size Width	
				Min.	Max.	Min.	Max.
CWLBG	0°	NO	NO	2-1/2 (64)	12 (305)	6 (152)	72 (1829)
CWMBG	15°	NO	NO	2-1/2 (64)	12 (305)	6 (152)	72 (1829)
CWLBD	0°	YES	NO	2-1/2 (64)	12 (305)	6 (152)	72 (1829)
CWMBD	15°	YES	NO	2-1/2 (64)	12 (305)	6 (152)	72 (1829)
CWLBS	0°	NO	YES	2-1/2 (64)	12 (305)	6 (152)	72 (1829)
CWMBBS	15°	NO	YES	2-1/2 (64)	12 (305)	6 (152)	72 (1829)
CWLBB	0°	YES	YES	2-1/2 (64)	12 (305)	6 (152)	72 (1829)
CWMBB	15°	YES	YES	2-1/2 (64)	12 (305)	6 (152)	72 (1829)

* Minimum and Maximum single unit sizes. Larger list widths furnished as separate pieces.

- NOTES:**
1. Single blade damper on Size 2-1/2" (64), opposed blade damper on size 3" (76) and larger.
 2. Option "R" is core retainer for side wall or ceiling.
 3. All ducts by others.
 4. Standard finish is #26 sanded, etched and lacquer.