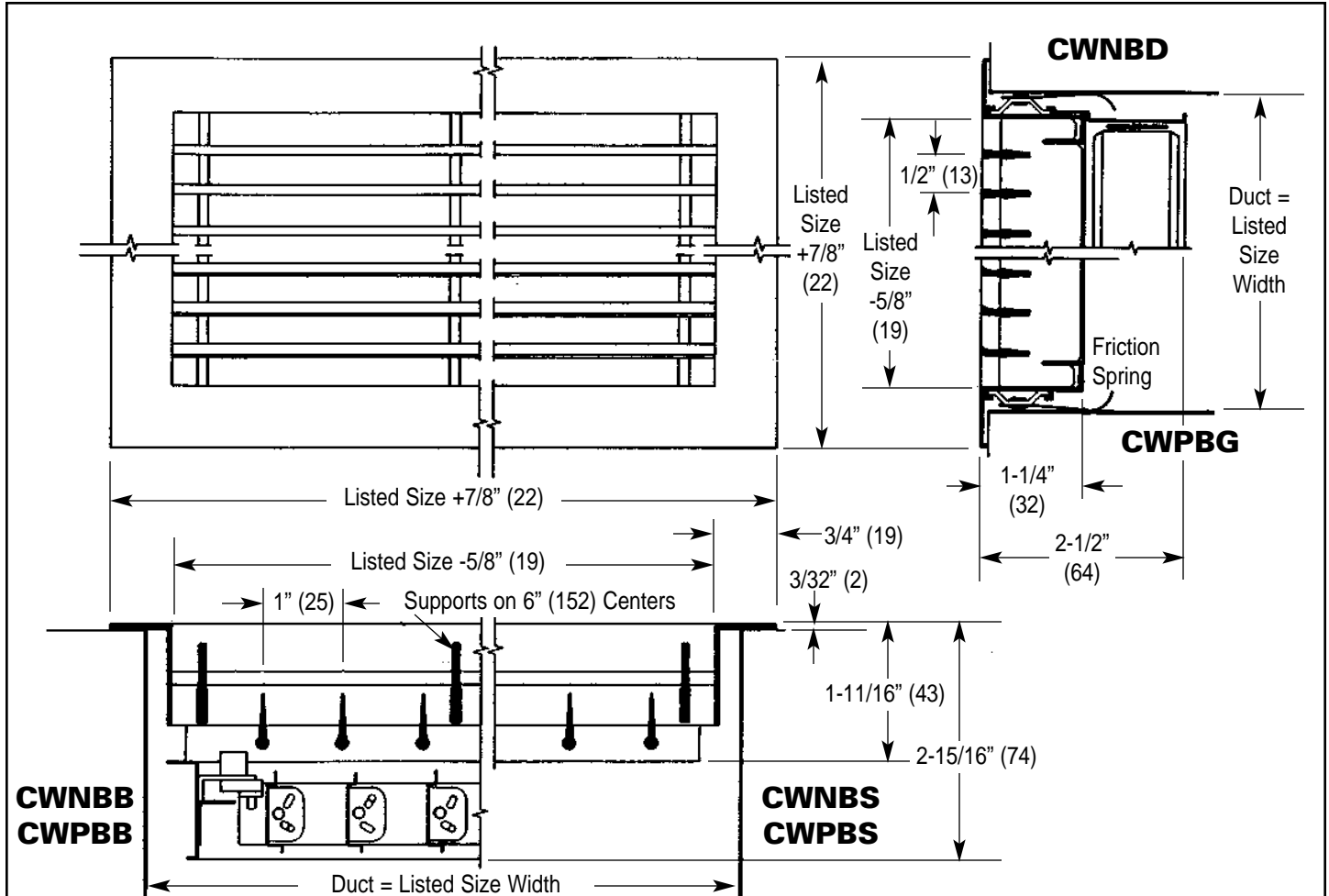


### Model CWNB and CWPB Trimaire Extruded Aluminum Linear Registers and Grilles Sill Application [1/8" (3) Bars on 1/2" (13) Centers]

Imperial [IP] Dimensions  
Metric (SI) in Parentheses

CARNES COMPANY 448 S. Main St., P. O. Box 930040, Verona, WI 53593-0040 Phone: (608)845-6411 Fax: (608)845-6504 www.carnes.com



| Model | Degree Blade Deflection | Damper | Straightening Vanes | Available Sizes In Inches (Millimeters)* |          |                   |           |
|-------|-------------------------|--------|---------------------|--|----------|-------------------|-----------|
|       |                         |        |                     | Listed Size Height                       |          | Listed Size Width |           |
|       |                         |        |                     | Min.                                     | Max.     | Min.              | Max.      |
| CWNBG | 0°                      | NO     | NO                  | 2 (51)                                   | 12 (305) | 6 (152)           | 72 (1829) |
| CWPBG | 15°                     | NO     | NO                  | 2 (51)                                   | 12 (305) | 6 (152)           | 72 (1829) |
| CWNBD | 0°                      | YES    | NO                  | 2 (51)                                   | 12 (305) | 6 (152)           | 72 (1829) |
| CWPBD | 15°                     | YES    | NO                  | 2 (51)                                   | 12 (305) | 6 (152)           | 72 (1829) |
| CWNBS | 0°                      | NO     | YES                 | 2 (51)                                   | 12 (305) | 6 (152)           | 72 (1829) |
| CWPBS | 15°                     | NO     | YES                 | 2 (51)                                   | 12 (305) | 6 (152)           | 72 (1829) |
| CWNBB | 0°                      | YES    | YES                 | 2 (51)                                   | 12 (305) | 6 (152)           | 72 (1829) |
| CWPBB | 15°                     | YES    | YES                 | 2 (51)                                   | 12 (305) | 6 (152)           | 72 (1829) |

\* Minimum and Maximum single unit sizes. Larger list widths furnished as separate pieces.

- NOTES:**
1. Single blade damper on size 2" (51).
  2. Opposed blade damper on size 2-1/2" (64).
  3. All ducts by others.
  4. Standard finish is #26 sanded, etched and lacquer.